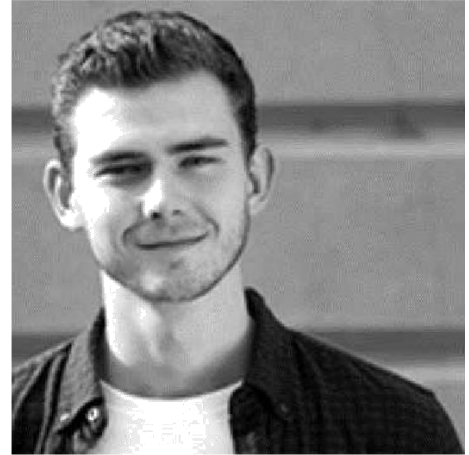




The Ellen MacArthur Foundation was launched in 2010 to accelerate the transition to a circular economy. Since its creation the charity has emerged as a global thought leader, establishing the circular economy on the agenda of decision makers across business, government and academia. With the support of its Core Philanthropic Partners SUN, MAVA, People's Postcode Lottery and The Eric and Wendy Schmidt Fund for Strategic Innovation and Knowledge Partners Arup, IDEO, McKinsey, SYSTEMIQ & Dragon Rouge Ltd, the Foundation's work focuses on six interlinking areas: Learning; Business; Institutions, Governments & Cities; Insight & Analysis; Systemic Initiatives; Communications.

Leo is Research Analyst in the Insights & Analysis team, which aims to provide evidence of the benefits of a circular economy through research and analysis.

Leo joined the Foundation as a Disruptive Innovation Festival (DIF) intern in 2016, shortly after graduating from the University of York, having achieved his bachelor's degree in Environmental Science, for which he earned a first-class honours with distinction. He spent the next 2 years as Learning Innovation Coordinator, where he provided support for the Foundation's education and learning programmes before taking on his new role in 2019.



**Leo Nutter**

Research Analyst

**Ellen MacArthur Foundation**